

Malaria continues to select for sickle cell trait in Central Africa

Eric Elguero^{a,1,2}, Lucrèce M. Délicat-Loembet^{a,b,1}, Virginie Rougeron^{a,b,1}, Céline Arnathau^a, Benjamin Roche^c, Pierre Becquart^a, Jean-Paul Gonzalez^d, Dieudonné Nkoghe^b, Lucas Sica^b, Eric M. Leroy^{a,b}, Patrick Durand^a, Francisco J. Ayala^{e,2}, Benjamin Ollomo^b, François Renaud^{a,2,3}, and Franck Prugnolle^{a,b,2,3}

^aMaladies Infectieuses et Vecteurs, Ecologie, Génétique, Evolution et Contrôle (Unité Mixte de Recherche 5290, Centre National de la Recherche Scientifique, Institut de Recherche pour le Développement, Université de Montpellier), 34295 Montpellier, France; ^bEvolutionary Parasitology Département, Centre International de Recherches Médicales de Franceville, BP 769 Franceville, Gabon; ^cUnité de Modélisation Mathématique et Informatique des Systèmes Complexes, Unité Mixte Internationale 209, Institut de Recherche pour le Développement, Université Pierre et Marie Curie, 93142 Bondy Cedex, France; ^dMETABIOTA Inc., Emerging Diseases & Biosecurity, Silver Spring, MD 20910; ^eDepartment of Ecology and Evolutionary Biology, University of California, Irvine, CA 92697

Contributed by Francisco J. Ayala, March 24, 2015 (sent for review January 2, 2015; reviewed by Richard E. Paul and Stephen M. Rich)

Sickle cell disease (SCD) is a genetic disorder that poses a serious health threat in tropical Africa, which the World Health Organization has declared a public health priority. Its persistence in human populations has been attributed to the resistance it provides to *Plasmodium falciparum* malaria in its heterozygous state, called sickle cell trait (SCT). Because of migration, SCT is becoming common outside tropical countries: It is now the most important genetic disorder in France, affecting one birth for every 2,400, and one of the most common in the United States. We assess the strength of the association between SCT and malaria, using current data for both SCT and malaria infections. A total of 3,959 blood samples from 195 villages distributed over the entire Republic of Gabon were analyzed. Hemoglobin variants were identified by using HPLC (HPLC). Infections by three species of *Plasmodium* were detected by PCR followed by sequencing of a 201-bp fragment of cytochrome *b*. An increase of 10% in *P. falciparum* malaria prevalence is associated with an increase by 4.3% of SCT carriers. An increase of 10 y of age is associated with an increase by 5.5% of SCT carriers. Sex is not associated with SCT. These strong associations show that malaria remains a selective factor in current human populations, despite the progress of medicine and the actions undertaken to fight this disease. Our results provide evidence that evolution is still present in humans, although this is sometimes questioned by scientific, political, or religious personalities.

sickle cell disease | *Plasmodium falciparum* | human evolution | Gabon | natural selection

Sickle cell disease (SCD) is a serious public health concern, present mainly in tropical countries, especially Africa (1, 2), but spreading to many other countries with the increasing population migrations (3, 4). It is due to a mutation of the gene coding for the β -globin, called the hemoglobin (Hb)S mutated allele, whereas the wild type is called the HbA allele (5). In the homozygous condition (hereafter denoted as HbSS), this mutation causes a severe disease, sickle cell anemia, which was almost always lethal before the advent of modern medicine, and still is where modern medical care is not available (6, 7). In the heterozygous condition (HbAS), called sickle cell trait (SCT), the mutation results in a much milder condition to the point that carriers may go unnoticed, although it has been associated with a variety of conditions or diseases like hematuria, splenic infarction, and exercise-related sudden death (8).

The global impact of SCD has been estimated at approximately 275,000 births every year (9) and could reach approximately 400,000 births annually by 2050 according to recent projections (4). The most affected continent is Africa, where approximately 85% of the cases are located, and where the vast majority of SCD children do not reach adulthood (10). SCT prevalence is more than 15% in a great part of Central Africa (7) and reaches 28% in

Gabon (11), with the consequence that on average between 1 and 2% of all born children are affected by SCD.

Besides its importance as a public health threat, SCD holds a special place in human population biology as a paradigmatic example of selective advantage of the heterozygotes, leading to balancing selection. Given that persons carrying the homozygous HbSS genotype had almost no chance to reproduce, there should be a steady decrease of the HbS allele frequency with each generation in the absence of a counteracting force. Thus, the question arises as to what was the force that maintained the HbS allele at a high frequency in human populations. Mainly based on the similarity of the geographical distribution of the two diseases (malaria and SCD), Haldane (12) hypothesized that SCT could provide protection against severe forms of malaria. This insight was substantiated thereafter by Allison (13); see refs. 14 and 15 for historical details and ref. 16 for a review of the proposed mechanisms of this protective effect. SCD/SCT is now a member of a set of several other genetic disorders or variants linked to malaria resistance, as showed by recent studies (17, 18).

Although the principle of SCT protection against severe malaria as the factor accounting for the high levels of SCT in some parts of the world is now generally accepted, the details of

Significance

Sickle cell disease (SCD) is a major cause of death for young children in Africa, which the World Health Organization has declared a public health priority. It is increasingly spreading outside of Africa because of population migrations, and, thus, it will become in the near future a global health concern. It is therefore important to understand how this genetic disorder is maintained in human populations. Although the association between *Plasmodium falciparum* malaria and SCD is well known, the strength of this association is far from known. Using an extensive cohort of 3,959 persons, distributed over the entire Gabonese Republic, this study shows that *P. falciparum* malaria continues to exert strong selective pressure in favor of the sickle cell allele.

Author contributions: P.B., J.-P.G., L.S., E.M.L., F.R., and F.P. designed research; E.E., L.M.D.-L., V.R., C.A., P.B., D.N., E.M.L., P.D., and B.O. performed research; E.E., V.R., B.R., F.J.A., and F.P. analyzed data; and E.E., L.M.D.-L., V.R., F.J.A., F.R., and F.P. wrote the paper.

Reviewers: R.E.P., Institut Pasteur; and S.M.R., University of Massachusetts.

The authors declare no conflict of interest.

Freely available online through the PNAS open access option.

¹E.E., L.M.D.-L., and V.R. contributed equally to this work.

²To whom correspondence may be addressed. Email: fjayala@uci.edu, eric.elguero@ird.fr, francois.renaud@ird.fr, or franck.prugnolle@ird.fr.

³F.R. and F.P. contributed equally to this work.

This article contains supporting information online at www.pnas.org/lookup/suppl/doi:10.1073/pnas.1505665112/-DCSupplemental.

this interaction are much less known. There is a lack of epidemiological studies assessing the strength of the association between malaria and SCT. Global studies, old (13) or recent (19), provide compelling evidence in favor of the so-called malaria hypothesis, but are based on historical data of malaria prevalence, and do not allow a precise estimation of the SCT effect against malaria. At a global scale, human populations differ in several respects, including their genetic backgrounds, lifestyles, and access to healthcare, among others. Moreover, human populations are immersed in diverse environments, especially concerning pathogen communities. Thus, there exist numerous potentially confounding factors, likely to obscure the precise relationship between malaria and SCT.

The aim of this paper is to provide an epidemiological study investigating the relationship between present-day malaria and SCT prevalence, at the scale of an African country, namely the Republic of Gabon. This scale is relevant to address the question raised; it is large enough for there to be variation in malaria circulation, and small enough for its populations to have fairly similar lifestyles in similar environments.

Results

Blood samples were obtained from 4,359 participants, 15–80 y old, sampled from 220 randomly selected villages, roughly evenly distributed among the nine Gabonese provinces (Fig. 1 *A* and *B*). Because this study focuses on the Bantu population, samples from Pygmy villages were not included, thus resulting in a cohort of 3,959 participants, 17–80 y old, from 195 villages. Among the 3,959 blood samples, 859 (21.7%) had the HbAS (SCT) genotype, one had the HbAC genotype, the remaining samples having the HbAA (normal) genotype. No sample had the HbSS genotype, thus confirming the high mortality in childhood associated with SCD. The HbAC individual—a foreigner from Ghana—was subsequently removed from the study, resulting in a sample size of 3,958.

Of the 3,958 samples, 2,061 (52%) were positive for *Plasmodium* cytochrome *b* (cytb). Of these 2,061 samples, 572 (28%) could not be used to determine the species, because of an insufficient cytb amplicon concentration. Among the remaining 1,489 samples, 1,387 (93.1%) had *Plasmodium falciparum* infection, 326 (21.9%) had *Plasmodium malariae* infection, and 32 (2.1%) had *Plasmodium ovale* infection. A total of 234 samples had two infections and 11 samples had three. Table 1 shows the distribution of samples according to genotype and *Plasmodium* species; Table 2 shows the prevalences of HbAS, *Plasmodium* sp., and *Plasmodium falciparum* for each 10-y age class; Dataset S1 shows detailed information for each of the 195 villages.

Because *P. ovale* infections were rare (10 only *P. ovale* and 11 associated with either *P. falciparum* or *P. malariae*), and because infections by *P. falciparum* and *P. malariae* were strongly associated (Chi-2 = 140 on 1 d.f., P value < $1.0e-16$), we decided to exclude the *P. ovale* association with the HbAS genotype, and to restrict ourselves to two analyses.

***P. falciparum* Malaria.** In this analysis, the 572 samples infected by an undetermined *Plasmodium* species were discarded. The GLM model showed that SCT was associated with *P. falciparum* malaria prevalence: odds-ratio = 1.054; 95% confidence interval (c.i.) = (1.014–1.096); P value = 0.008; and with age: odds-ratio = 1.071, 95% c.i. = (1.012–1.13), P value = 0.017. Malaria prevalence is taken in units of 10%, and age is taken in units of 10 y. In other words, the odds-ratio for malaria prevalence is given for a 10% increase in prevalence, and the odds-ratio for age is given for a 10-y increase of age. The 1.071 odds-ratio implies that when age changes from 50 y (the sample median) to 60 y, the SCT prevalence changes from 18.4% to 19.5%, an increase by 5.5%. SCT was not associated with sex: odds-ratio M vs. F: 0.997, 95% c.i. = (0.85–1.17), P value = 0.97. Fig. 1 *A* and *B* show the maps of SCT and *P. falciparum* prevalence. Fig. 1 *C* shows the

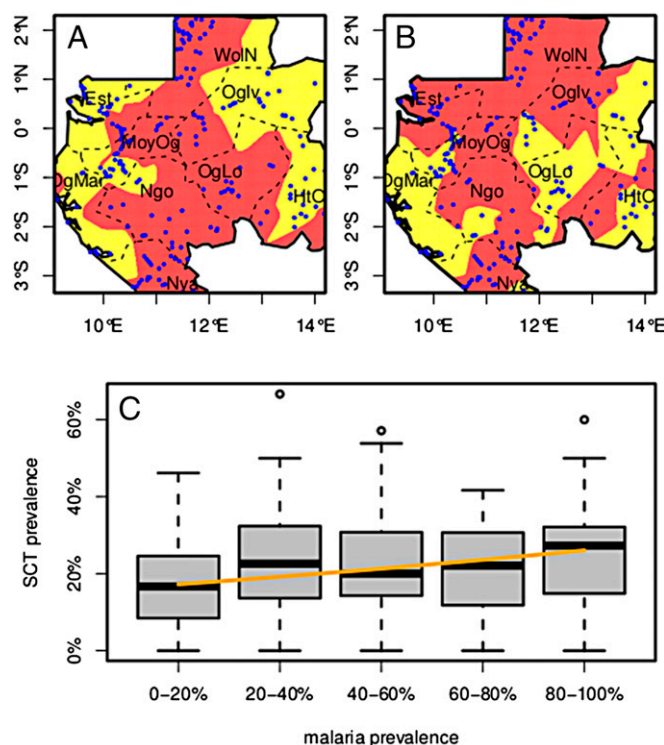


Fig. 1. Map of Gabon. (*A*) SCT prevalence. Pale yellow, prevalence less than 10%; dark red, prevalence more than 10%; blue dots, sampled villages; dotted lines, province limits. (*B*) Malaria prevalence. Pale yellow, prevalence less than 30%; dark red, prevalence more than 30%. To generate these maps for each cell of a 200×200 grid covering the country, prevalence was computed from the pooled populations of all villages within a 0.5 degree of latitude/longitude radius. Province names abbreviations: Est, Estuaire; HtOg, Haut-Ogoouée; MoyOg, Moyen-Ogoouée; Ngo, Ngounié; Nya, Nyanga; Oglv, Ogoouée-Ivindo; OglLo, Ogoouée-Lolo; OglMar, Ogoouée-Maritime; WolN, Woleu-Ntem. (*C*) SCT prevalence as a function of *P. falciparum* prevalence. Villages have been grouped by 20%-wide intervals of *Pf* prevalence. Boxes extend from the 25% to the 75% of the distribution, whiskers extend to 1.5 times the interquartile range, and circles show extreme values. The orange line shows the SCT prevalence prediction of the statistical model as a function of *Pf* prevalence alone. Age has been set to its median value (49 y), and the random effects have been set to zero.

distribution of village SCT prevalence as a function of village malaria prevalence, as well as the SCT prevalence predicted by the statistical model.

All-*Plasmodium* Malaria. Because it is likely that most of the excluded 572 undetermined infections were actually *P. falciparum* infections, removing them could bias the results. Hence, we performed a subsidiary analysis. In this analysis, the *Plasmodium* species was ignored; infection status was taken as positivity to *Plasmodium* cytb. The GLM model showed that SCT was associated with *Plasmodium* sp. malaria prevalence: odds-ratio = 1.058, 95% c.i. = (1.012–1.100), P value = 0.005, and with age: odds-ratio = 1.072, 95% c.i. = (1.014–1.134), P value = 0.015. SCT was not associated with sex: odds-ratio M vs. F: 0.992, 95% c.i. = (0.85–1.16), P value = 0.92.

Discussion

The main finding of this study is a strong association between *P. falciparum* malaria and SCT prevalence. The all-*Plasmodium* analysis, yielding almost identical estimates to those obtained for the analysis of *P. falciparum* alone, shows that the removal of the undetermined *Plasmodium* infections did not result in bias, but because 90% of all *Plasmodium* infections are *P. falciparum*, it

Table 1. Blood samples classified according to genotype and *Plasmodium* species

Genotype	Not infected	Undetermined <i>Plasmodium</i>	Pf only	Pm only	Po only	Pf+Pm	Pf+Po	Pm+Po	Pf+Pm+Po	Total
HbAA	1,492	446	894	67	10	172	8	2	8	3,099
HbAS	405	126	250	23	0	51	1	0	3	859
Total	1,897	572	1,144	90	10	223	9	2	11	3,958

Pf, *Plasmodium falciparum*; Pm, *Plasmodium malariae*; Po, *Plasmodium ovale*.

does not add new information. Translated into prevalence scale, the observed odds-ratio of 1.054 for *P. falciparum* alone means that when, for example, the malaria prevalence changes from 40% (its average value) to 50%, the number of SCT carriers changes from 21.1 to 22.0%, that is an increase in number of SCT carriers by 4.3%. The same change in malaria prevalence (40–50%) would yield, in the absence of bias introduced by genetic counseling, a change in the prevalence of SCD (homozygotes) newborns from 4.4 to 4.8%, an increase by more than 9%. Using the formalism of Hartl and Clark (20), if W_{AA} , W_{AS} , and W_{SS} denote the fitnesses of the three genotypes, we have here $W_{SS} = 0$, we can assume conventionally that $W_{AS} = 1$ and then $W_{AA} = 1-s$, where s is the selection coefficient against the HbAA genotype. It can be proved that at equilibrium, $s = p/(1-p)$ where p is the frequency of the HbS allele. If we take the 21% HbAS average prevalence in Gabon, it translates to a HbS frequency $p = 0.105$ and to a selection coefficient $s = 0.12$, 95% c.i. = (0.110–0.125), a figure comparable to that of 0.11 found by Cavalli-Sforza and Bodmer (21). If we consider only those villages where the estimated prevalence of *P. falciparum* infection is less than 20%, we find $s = 0.093$, 95% c.i. = (0.070–0.121), and if on the contrary we consider those villages where the prevalence is above 60%, we find $s = 0.135$, 95% c.i. = (0.116–0.156). If we now consider the effect of age, taking an average 50% of *P. falciparum* prevalence, we find that the selection coefficient varies from $s = 0.118$, 95% c.i. = (0.117–0.119) for the cohort of persons who were 20 y old at the time of the survey, to $s = 0.121$, 95% c.i. = (0.118–0.123) for persons who were 60 y old.

The positive association between asymptomatic *P. falciparum* malaria and SCT prevalence in Bantu villages is consistent with previous findings, in particular with what Piel et al. observed in Africa, in a recent and elaborate study (19). There are, however, a number of differences. First, these authors (19) did not use a continuous measure of malaria prevalence, but instead a classification of endemicity in six levels, from malaria-free to holoendemic. Second, they used malaria data from the preintervention era, which occurred before 1960. Third, having individual data enabled us to take into account the individual potentially confusing factors of age and sex, although it turned out that only age was associated with SCT and malaria.

The most significant difference between the present study and previous ones is that other studies used indices based on clinical malaria, whereas our estimates of malaria prevalence are based partly on asymptomatic infections. Indeed, only healthy individuals were enrolled, but whether the infected individuals were recovering from a clinical episode, or on the contrary would develop symptoms sometime after having been sampled, is not known. One could argue that SCT, by providing protection against clinical malaria (22, 23), should be positively associated with asymptomatic malaria and

negatively associated with clinical malaria. However, mathematical modeling (24, 25) has shown that, in the long term, high levels of malaria prevalence select for SCT, and that, in turn, a high SCT prevalence is associated with a higher prevalence of asymptomatic malaria, so that SCT prevalence is positively associated with both asymptomatic and clinical malaria. Hence, our findings demonstrate a selective effect of *P. falciparum* malaria on SCT.

The second finding of our study, namely the significant increase of SCT prevalence with age, could be explained by one of two hypotheses. The first one is that the significant increase of SCT with age could indicate that malaria selective pressure is relaxing with time as a result of improved medical care and prophylaxis, so that elder people experienced stronger selective pressure in their youth than today's young people. Alternatively, the increase of SCT prevalence with age could indicate that the HbAS genotype continues to provide protection against severe malaria with respect to the HbAA genotype in adult life. Indeed, contrary to the once-prevailing opinion, immunity to severe malaria is not always acquired in the first years of life (26, 27) and severe malaria is not uncommon in adults (28, 29).

Sex was not associated with SCT, a result that is not surprising given that the β -globin gene is autosomal. This lack of association between SCT and sex shows that there is no significant difference in the protection against malaria provided by SCT to men and women.

The association observed at the level of Gabonese villages could be of interest from a health management perspective. Villages with a high level of malaria transmission could be the targets of coupled antimalaria campaigns and information campaigns regarding SCD. In any event, malaria and SCD are two entangled health threats that should be managed synergistically. In Gabon, given that approximately 21% of the population carries the S allele (11), on average 500 (1%) of the approximately 50,000 children born each year in the country (30) will carry the HbSS genotype and, hence, develop SCD.

The impact of our results goes far beyond the public health perspectives. To our knowledge, our results constitute one of the best illustrations that present day humans are still evolving in response to the selective pressures imposed by their environment, notably in the present case, the pathogenic one.

Reports from the scientific, public, and religious communities have repeatedly claimed that evolution is no longer relevant to humans and that our species now mostly or only depends on culture and technology for survival (31). Several studies have provided clear evidence that selection impacted human evolution after the agricultural revolution. However, most of the examples are historical (before the industrial era) (see refs. 31 and 32 for reviews) or concerned populations in the last hundred years (e.g., refs. 33

Table 2. Prevalences of HbAS genotype, *Plasmodium* sp infection, and *P. falciparum* infection by 10-y age class

Age class	15–24	25–34	35–44	45–54	55–64	65+	Total
Sample size	351	537	725	846	1022	477	3,958
HbAS	74 (21.1%)	100 (18.6%)	151 (20.8%)	185 (21.9%)	239 (23.3%)	110 (23.1%)	859
<i>Plasmodium</i> sp	197 (56.1%)	288 (53.6%)	407 (56.1%)	460 (54.4%)	504 (49.3%)	205 (43.0%)	2,061
<i>P. falciparum</i>	144 (41.0%)	206 (38.4%)	276 (38.1%)	285 (33.7%)	344 (33.7%)	132 (27.7%)	1,387

and 34). Our results concern present day human populations (persons born 15–80 y ago) and clearly show that, at least in human populations of low income, such as in our study, where medical advances remain limited, biological adaptation is still an outcome driven by evolution to respond to environmental pressures imposed by pathogens, in particular malaria.

Materials and Methods

Population Under Study. The Republic of Gabon is a Central African country, with an area of 270,000 square kilometers and a population of 1.5 million people (30). The Gabonese populations belong mainly to two ethnocultural backgrounds: the Bantu people, longtime established farmers, and the Pygmy people, who traditionally lived a nomadic life in the forest and are now becoming more and more sedentary (35). Because of this difference in lifestyle and environment, we decided to exclude pygmies from our study. We therefore are concerned only with the Bantu populations of Gabon.

Data were collected between June 2005 and September 2008, as part of a project focused on several pathogens in Gabon (36). First, 220 villages were randomly selected, out of the 2,056 Gabonese villages, so as to cover evenly the nine Gabonese provinces. In the 220 villages, all healthy volunteers over the age of 15 who had been residing in the village for more than one year were included in the study, resulting in 4,349 participants. Fig. 1 *A* and *B* show the location of the included villages.

Written consent was secured from all participants. In the case of minors, consent was obtained from at least one parent. Our study was approved by the Gabonese Ministry of Health on March 15, 2005, with research authorization No. 00093 for our samples.

Detection of Hemoglobin Variants. The presence of abnormal hemoglobin was ascertained by isoelectric focusing. When an abnormal protein was detected,

HPLC_{cy} was used to identify the variant, HbS or HbC (37, 38), according to the protocol described in ref. 39. Details of the procedures are described (11).

Plasmodium Detection and Species Determination. *Plasmodium* infection data were obtained by a two-step process. We first tested the blood samples for *Plasmodium* cytb mitochondrial sequences by nested PCR, as described (40). To identify the *Plasmodium* species present in each positive sample, we used deep sequencing. More particularly, we used the 454 GS-FLX Titanium technology on pools of several hundreds of samples amplified for a fragment of 201 bp (Table S1 and Table S2). A sample was considered infected with a given species of *Plasmodium* when the proportion of reads attributed to that species was at least 5% of all reads for that sample. Details are given in *SI Materials and Methods*.

Statistical Analyses. The association between SCT and the intensity of malaria circulation in the living environment of a given individual was assessed by logistic regression (41). A proxy for malaria circulation was taken as the malaria prevalence in the individual's village, as estimated by the proportion of carriers among the sampled individuals. To take into account the hierarchical sampling, we introduced two nested random effects: village and province (42). Included potential confounders were sex and age. All computations were performed with the R software and specifically the lme4 package (43, 44).

ACKNOWLEDGMENTS. The authors thank Centre National de la Recherche Scientifique (CNRS), Centre International de Recherche Médicales de Franceville (CIRMF) and Institut de Recherche pour le Développement (IRD) for general support, International Atomic Energy Agency (IAEA) for the funding of the Center for sickle-cell screening and for supporting the national program on neonatal diagnosis in Libreville, Gabon, and Dr. Krishnamoorthy Rajagopal from Institut National de la Santé et de la Recherche Médicale (INSERM) for initiating research on Sickle Cell Disease at CIRMF. This research was funded by Agence Nationale de la Recherche (ANR) Grant ORIGIN, JCJC 012.

- Makani J, Williams TN, Marsh K (2007) Sickle cell disease in Africa: Burden and research priorities. *Ann Trop Med Parasitol* 101(1):3–14.
- Rees DC, Williams TN, Gladwin MT (2010) Sickle-cell disease. *Lancet* 376(9757):2018–2031.
- Roberts I, de Montalembert M (2007) Sickle cell disease as a paradigm of immigration hematology: New challenges for hematologists in Europe. *Haematologica* 92(7):865–871.
- Piel FB, Hay SI, Gupta S, Weatherall DJ, Williams TN (2013) Global burden of sickle cell anaemia in children under five, 2010–2050: Modelling based on demographics, excess mortality, and interventions. *PLoS Med* 10(7):e1001484.
- Hunt JA, Ingram VM (1958) Allelomorphism and the chemical difference between the globins of normal human and sickle-cell anaemia haemoglobin. *Nature* 178:792–794.
- Lehmann H, Raper AB (1956) Maintenance of high sickling rate in an African community. *BMJ* 2(4988):333–336.
- Grosse SD, et al. (2011) Sickle cell disease in Africa: A neglected cause of early childhood mortality. *Am J Prev Med* 41(6, Suppl 4):S398–S405.
- Tsaras G, Owusu-Ansah A, Boateng FO, Amoateng-Adjepong Y (2009) Complications associated with sickle cell trait: A brief narrative review. *Am J Med* 122(6):507–512.
- Modell B, Darlison M (2008) Global epidemiology of haemoglobin disorders and derived severity indicators. *Bull World Health Organ* 86(6):480–487.
- Weatherall DJ, Akinyanju O, Fucharoen S, Olivieri N, Musgrove P (2006) Inherited disorders of hemoglobin. *Disease Control Priorities in Developing Countries*, ed Jamison D (Oxford Univ Press, New York), 2nd Ed, pp 663–680.
- Délicat-Loembet LM, et al. (2014) Prevalence of the sickle cell trait in Gabon: A nationwide study. *Infect Genet Evol* 25:52–56.
- Haldane JBS (1949) Disease and evolution. *Ric Sci* 35(Suppl):68–76.
- Allison AC (1954) The distribution of the sickle-cell trait in East Africa and elsewhere, and its apparent relationship to the incidence of subtertian malaria. *Trans R Soc Trop Med Hyg* 48(4):312–318.
- Serjeant GR (2010) One hundred years of sickle cell disease. *Br J Haematol* 151(5):425–429.
- Hedrick PW (2011) Population genetics of malaria resistance in humans. *Heredity (Edinb)* 107(4):283–304.
- López C, Saravia C, Gomez A, Hoebcke J, Patarroyo MA (2010) Mechanisms of genetically-based resistance to malaria. *Gene* 467(1–2):1–12.
- Jallow M, et al.; Wellcome Trust Case Control Consortium; Malaria Genomic Epidemiology Network (2009) Genome-wide and fine-resolution association analysis of malaria in West Africa. *Nat Genet* 41(6):657–665.
- Malaria Genomic Epidemiology Network; Malaria Genomic Epidemiology Network (2014) Reappraisal of known malaria resistance loci in a large multicenter study. *Nat Genet* 46(11):1197–1204.
- Piel FB, et al. (2010) Global distribution of the sickle cell gene and geographical confirmation of the malaria hypothesis. *Nat Commun* 1(104):104.
- Hartl DL, Clark AG (1997) *Principles of Population Genetics* (Sinauer Associates, Sunderland, MA), 3rd Ed.
- Cavalli-Sforza LL, Bodmer WF (1971) *The Genetics of Human Populations* (WH Freeman, San Francisco).
- Williams TN, et al. (2005) Sickle cell trait and the risk of Plasmodium falciparum malaria and other childhood diseases. *J Infect Dis* 192(1):178–186.
- Williams TN (2006) Human red blood cell polymorphisms and malaria. *Curr Opin Microbiol* 9(4):388–394.
- Feng Z, Smith DL, McKenzie FE, Levin SA (2004) Coupling ecology and evolution: Malaria and the 5-gene across time scales. *Math Biosci* 189(1):1–19.
- Shim E, Feng Z, Castillo-Chavez C (2012) Differential impact of sickle cell trait on symptomatic and asymptomatic malaria. *Math Biosci Eng* 9(4):877–898.
- Mayor A, et al. (2007) The epidemiology of malaria in adults in a rural area of southern Mozambique. *Malar J* 6(3):3.
- Griffin JT, et al. (2015) Gradual acquisition of immunity to severe malaria with increasing exposure. *Proc Biol Sci* 282(1801):20142657.
- Dondorp AM, et al. (2008) The relationship between age and the manifestations of and mortality associated with severe malaria. *Clin Infect Dis* 47(2):151–157.
- Bouyou-Akotet MK, et al. (2014) Falciparum malaria as an emerging cause of fever in adults living in Gabon, Central Africa. *BioMed Res Intl* 2014:1–7.
- United Nations, Department of Economic and Social Affairs, Population Division (2013) *World Population Prospects: The 2012 Revision* (Comprehensive Tables, Geneva), Vol 1.
- Stock JT (2008) Are humans still evolving? *EMBO Rep* 9(Suppl 1):S51–S54.
- Cochran G, Harpending H (2009) *The 10,000 Year Explosion. How Civilization Accelerated Human Evolution* (Basic Books, New York).
- Milot E, et al. (2011) Evidence for evolution in response to natural selection in a contemporary human population. *Proc Natl Acad Sci USA* 108(41):17040–17045.
- Byars SG, Ewbank D, Govindaraju DR, Stearns SC (2010) Colloquium papers: Natural selection in a contemporary human population. *Proc Natl Acad Sci USA* 107(Suppl 1):1787–1792.
- Matsuura N (2006) Sedentary lifestyle and social relationship among Babongo in southern Gabon. *Afr Study Monogr* 33(Suppl):71–93.
- Becquart P, et al. (2010) High prevalence of both humoral and cellular immunity to Zaire ebolavirus among rural populations in Gabon. *PLoS ONE* 5(2):e9126.
- Ingram VM (1957) Gene mutations in human haemoglobin: The chemical difference between normal and sickle cell haemoglobin. *Nature* 180(4581):326–328.
- Siguret V, Andreux JP (1997) Diagnostic biologique des hémoglobinopathies par analyse du phénotype [Biological diagnosis of haemoglobinopathies by phenotype analysis]. *Ann Biol Clin (Paris)* 55(2):103–112. French.
- Tatu T, Gategasem P, Hathirat P (1997) Hemoglobin typing by high performance liquid chromatography. *Southeast Asian J Trop Med Public Health* 28(2):417–423.
- Ollomo B, et al. (2009) A new malaria agent in African hominids. *PLoS Pathog* 5(5):e1000446.
- Agresti A (1990) *Categorical Data Analysis* (John Wiley & Sons, New York).
- Pinheiro JC, Bates DM (2000) *Mixed-Effects Models in S and S-PLUS* (Springer, New York).
- R Core Team (2013) *R: A language and environment for statistical computing* (R Foundation for Statistical Computing, Vienna).
- Bates D, Maechler M, Bolker B, Walker S (2014) *lme4: Linear mixed-effects models using Eigen and S4. R package version 1.1–5*. CRAN.R-project.org/package=lme4.