

Formative assessment:
“Minute-paper”

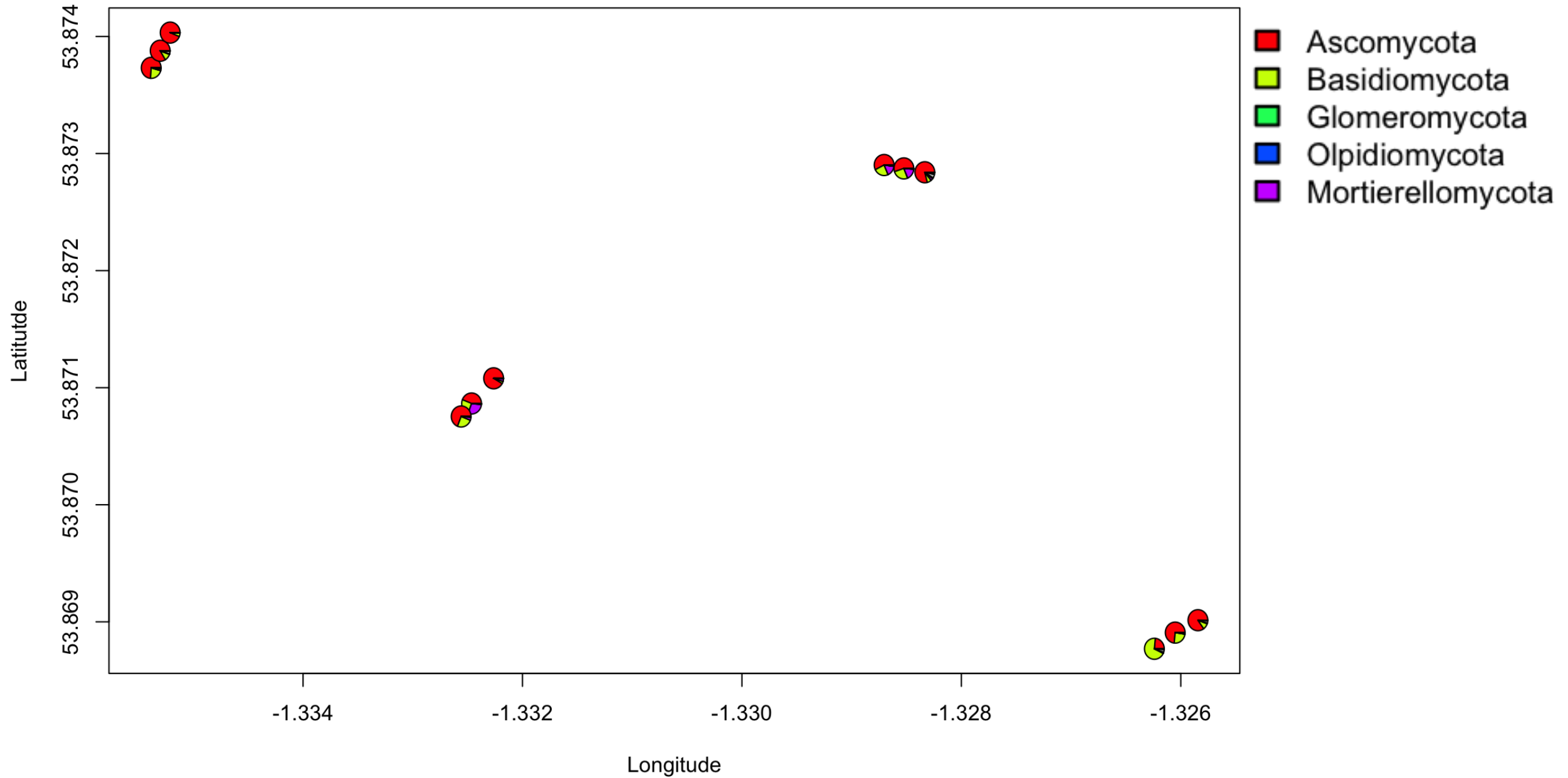
Critical analysis of a figure:

- Why was the figure drawn? What research question does this attempt to address?
- What does the figure show? Does it successfully address the research question or should further graphs be drawn/statistical tests performed to more directly address the research question?
- What is confusing or misleading about the figure? How would you address these concerns?
- What additional scientific questions does the figure raise?

Reminders about the fungal ecology project:

- This project investigates fungal diversity in soil near hedge roots
- Environmental samples were collected at 12 sites, across 4 different fields, with 2-5 biological replicates collected per site.
- To form the figure on the next page, we calculated the frequency of each phylum of fungi in each site (combining the replicates)

Example figure:



Peer review of minute-paper

- Swap your paper with your neighbor and assess it against the relevant areas of the marking scheme.
- Differences between this minute-paper and the final assessment:
 - You will be critically analyzing multiple figures and at least one statistical test
 - This needs to form a single coherent 'story' or 'narrative':
 - The overarching research aim is **X**, but I will start with addressing a simpler question **Y**
 - To answer research question **Y**, I drew this figure
 - This figure taught me..., but raised a new question **Z**
 - Now I draw this new figure to address this new question... (repeat)
 - In the end, this addresses the overall research aim because...